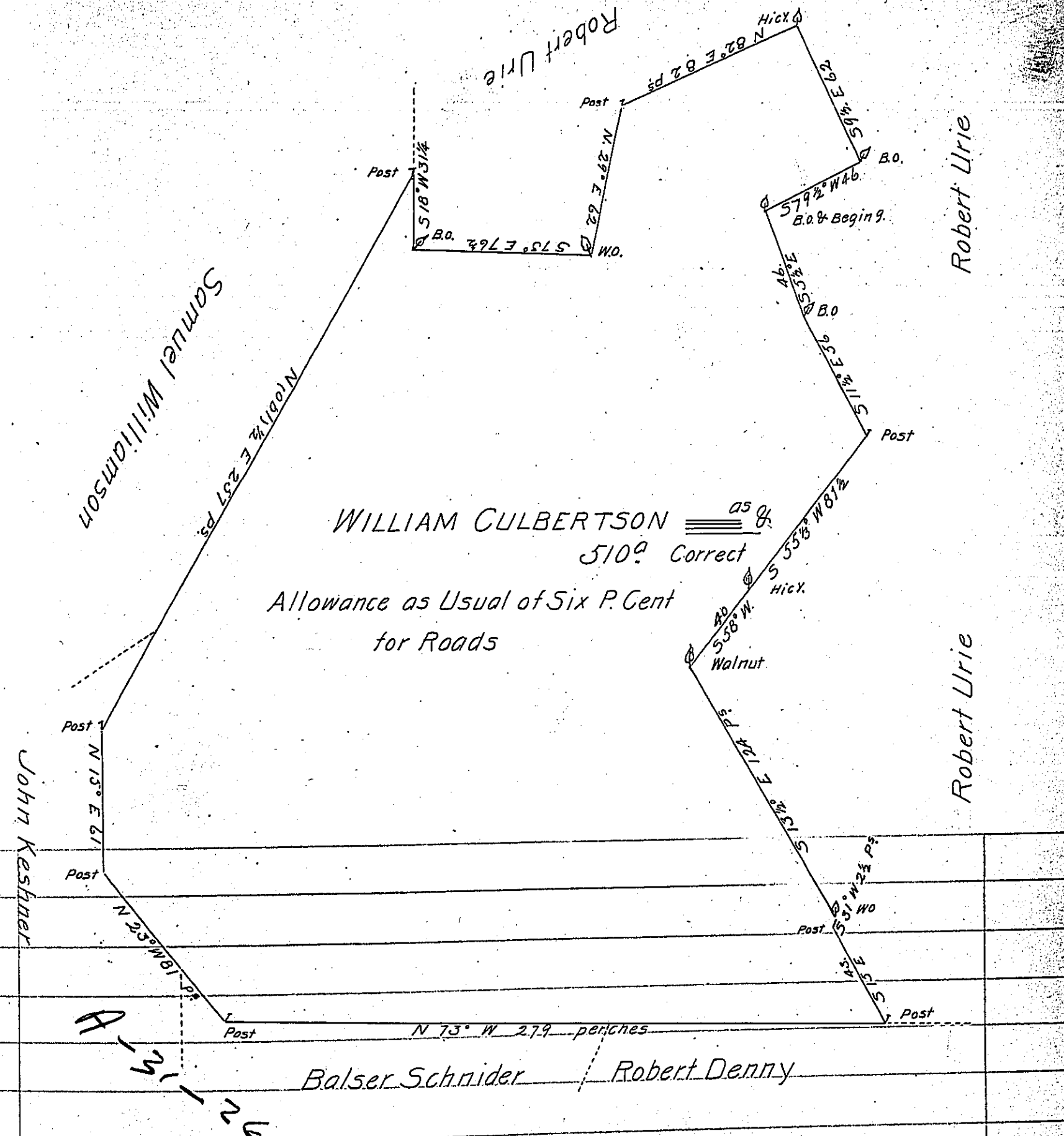


UPSIDE DOWN



A Draught of a Tract of Land Situate in East Pennsborough Township
 in Cumberland County (obl.) containing five Hundred and ^{Ten Acres} ~~ten and one fourth~~
~~acres~~ and the Usual Allowance of Six P. Cent for Roads; Surveyed
 for William Culbertson the 7th Day of November 1771 in Pursuan-
 ce of the Proprietaries Warrant Bearing Date at Philadelphia the
 twenty third Day of February Anno Domini one th (obl.) and seven hundred
 and seventy one.

To John Lukens Esq^r } Ex^d & Corrected
 Surveyor General }
 IN TESTIMONY that the above is a copy of the original remaining on file in
 the Department of Internal Affairs of Pennsylvania, made
 conformably to an Act of Assembly approved the 16th day of
 February, 1833, I have hereunto set my Hand and caused
 the Seal of said Department to be affixed at Harrisburg,
 this twenty ninth day of April 1904.

George D. Denny
 Secretary of Internal Affairs.